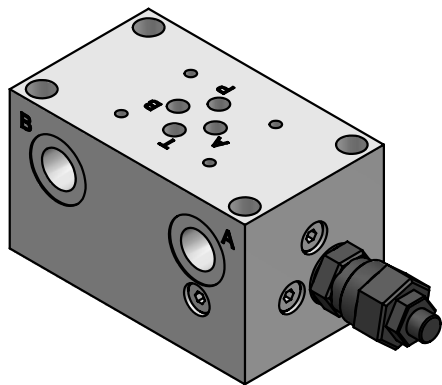
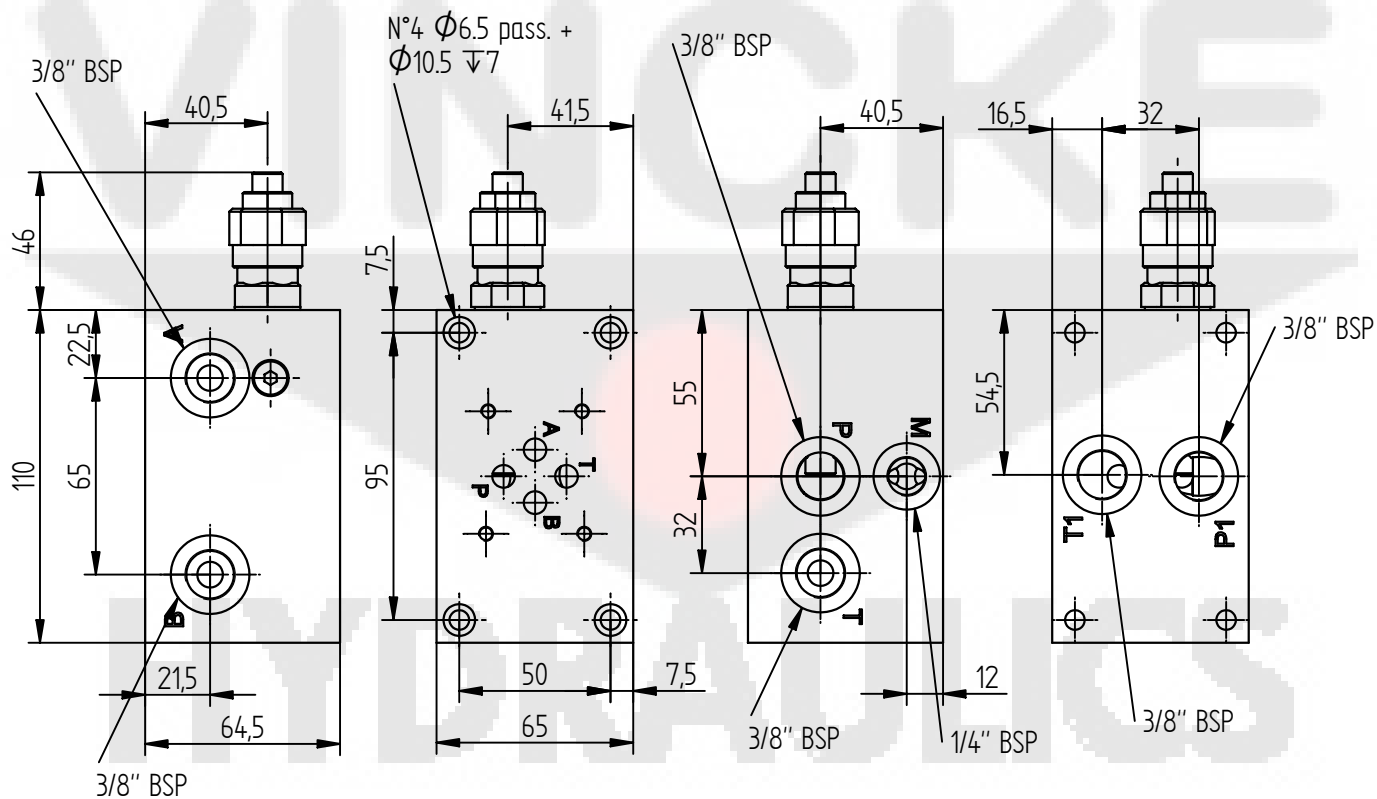
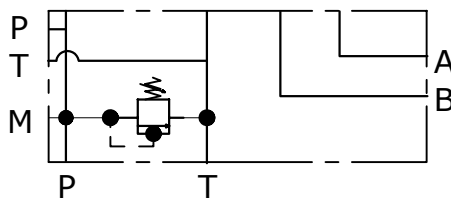


**BASE SINGOLA CETOP 3 CON UTILIZZI A-B-P-T LAT. P-T POST. 3/8" BSP
SUB - PLATE CETOP 3 WITH A-B-P-T PORTS ON SIDE P-T BACK 3/8" BSP**



Schema idraulico
Hydraulic diagram



Valve and cavity = see page C01

ES 06-10-38-0-0-H

S=STEEL
A=ALUMINIUM

H=HEXAGONAL HEAD SCREW
K=KNOB see page V01

0=WITHOUT RELIEF VALVE
1=WITH R. V.
2=R.V. READY

0=WITHOUT R.V.
1=5-50 BAR
2=30-100 BAR
3=50-250 BAR
4=100-350 BAR